



## Welcome to Christian Legal Aid of Los Angeles

Dear Friends of CLA-LA,

He has risen! Hallelujah! He has risen indeed! What a privilege it is to work with you in service unto our Lord. Here is our report on what has been going on this year. If you have any questions, please email us at anytime.

### In This Issue

[FIVE YEAR PLAN: Progress Report](#)

[Who Are We Serving?](#)

[Prayer Request](#)

[Pro Bono Attorneys](#)

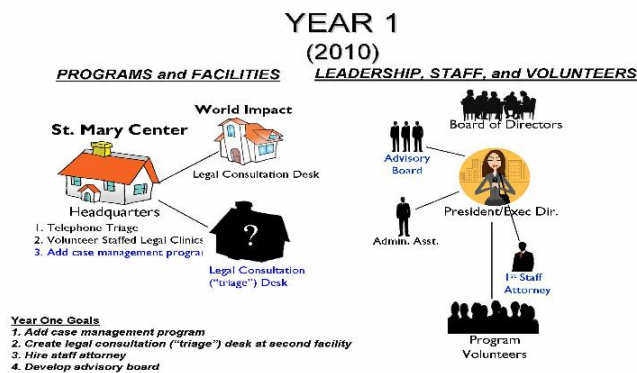
## CLA-LA'S FIVE YEAR PLAN Progress Report

At the 2009 Prayer Breakfast, we debuted our strategic five year plan. We shared our goals of hiring additional staff attorneys, opening new clinic locations, and expanding our program to provide case management services and representation at hearings and summary

proceedings. We invited you to participate. Many of you accepted this invitation and submitted response cards with amazing suggestions. Among the responses were suggestions to partner with Salvation Army. Amazingly, shortly after our Prayer Breakfast, we were connected with the Salvation Army's homeless and transitional shelter in the City of Bell to explore possible opportunities of partnership. We have begun to provide legal triage services there on a trial basis as we pray for God's leading and discernment on how to proceed in the future.

In addition to adding a second legal triage site, we began providing case management services to some clients. If you would like to learn about the types of clients we serve and the types of case management matters we have taken on, please read the section "Who Are We Serving?" below.

With the second legal triage site and the addition of case management services, we are halfway along in meeting our first year goals. The most exciting part of this



Program and Site Locations

You can [DONATE ONLINE NOW](#) by clicking the button below!



great adventure is to witness God leading the direction - whether it be to say "No" or "Yes" - what a learning experience this has been for all of us at CLA-LA in learning to trust in God.

As we continue to move forward, please pray that we will be better at harkening our ears, hearts, and minds to God's leading. Thank you.

## Who Are We Serving?

Two questions people frequently ask us are where do you get your clients and what type of matters do you see.

The answer to the first question is rather easy. We advertise with everyone and to everyone. We are listed with the Los Angeles County referral line - 211 LA County (formerly known as "Infoline") and the Rainbow Resource Directory. Then, when we have a spare moment, we contact local social workers' offices, other non-profits, churches, schools, etc. and let them know about the services we provide.

Since CLA-LA's client market is so large, the types of problems a typical CLA-LA client presents are, many times, unique. For example, one client came to CLA-LA to "clean up her record." Over 15 years ago, she had spanked her older elementary school aged child. In response, her child called the police. The police did not come out to investigate, they did not take a police report, the department of social services was never called, and she was never prosecuted by a government agency. Despite these facts, every time she underwent a background check (she was a childcare worker), her file was flagged due to this incident. Under the mandatory reporting law, police officers had to report all allegations of child abuse with the Department of Justice's Child Abuse Central Index. Since she was never convicted, this was not an offense she could expunge. Thus, for this single mother of four children, the fight to survive and remain self-sufficient was made that much more difficult. (Through our research we discovered a new law and procedure that would permit this client to request a removal of this negative history. Educating the police department of this new process, CLA-LA was able to clean the client's record from the Child Abuse Central Index.)

Another example was Joe who asked CLA-LA for advice because his picture and fingerprints were assigned to another man with a similar last name. Apparently the Department of Motor Vehicles made a clerical error and erroneously assigned Joe's identity to another man who had a criminal bent. Joe shared that he learned about this mistaken identity when he was brought to stand trial on a criminal matter. Just before a hearing, Joe's public defender realized that the police report identified a man that did not fit Joe's description (by several inches in height). Although Joe was released, his identity was still not his own. CLA-LA assisted Joe in starting the process of separating his identity from the other man and reclaiming his face and fingerprint.

Of course not all of CLA-LA's clients are like the ones above. We see many "traditional" problems such as landlord-tenant, consumer rights, immigration, small claims court matters, etc. We tailor our services to the needs of the client. I suppose you can say that we are "In-House Counsel" for the poor and the working poor.



What is CLA-LA?

Christians working  
together to bring

GOD'S  
LOVE, HOPE,  
and  
JUSTICE

to the poor in  
LOS ANGELES.

[Join Our Mailing List!](#)

## Prayer Request

Everyone, we covet your prayers. As it is stated in Acts 6:12, "For our struggle is not against flesh and blood, but against the rulers, against the authorities, against the powers of this dark world and against the spiritual forces of evil in the heavenly realms."

We desire to share God's love, hope, and justice to the world. We want to be a witness that God cares and that He loves mankind. We also want to support our brothers and sisters in the faith, to encourage them and, again, to present our witness by manifesting our love for one another.

As the battle rages here and in the lives of our volunteers, supporters, and clients, please pray that God will be glorified, that He will protect us, and that we ALL will be filled with the inexplicable joy that comes from doing His will. We will be praying the same for you.

## Pro Bono Attorneys

We are always in search of attorneys willing to take on a pro bono matter. CLA-LA pre-screens the clients and provides the participating attorney a fact pattern so that an attorney does not feel obligated to take on a client before knowing the facts. If you are interested in being on our panel, please contact Sarah Olney at [sarah@christianlegalaid-la.org](mailto:sarah@christianlegalaid-la.org).

Christian Legal Aid of Los Angeles

[www.christianlegalaid-la.org](http://www.christianlegalaid-la.org)

t: 323.319.3559

f: 323.337.8317